



# PROFILE 0

LOW PROFILE NEURO PLATING SYSTEM

RETHINKING  
POSSIBILITIES  
RESHAPING  
LIVES

At OsteoMed, we work alongside surgeons who devote their lives to improving those of others. Our goal: rethinking the possibilities that have the power to reshape lives.

With a spirit of innovation and a relentless focus on quality, we offer surgeons a wide range of choices for neurosurgical and craniomaxillofacial procedures.





DRIVERS  
OSTEOMED 220-0261

DRILLS

220-0261

218-0201

218-0208

218-0212

218-0207

218-0210

218-0202

218-0204

PROFILE Ø  
1.6mm

220-0265



Rethinking Possibilities, Reshaping Lives



# PROFILE

## LOW PROFILE NEURO PLATING SYSTEM

Patented Auto-Drive screw with friction fit technology

## Lowest Profile Neurosurgical Plating System

Profile Zero is an innovative addition to the OsteoMed Neurosurgical plating product offering. At .25mm plate profile, the system virtually eliminates patient palpability. The uniquely engineered plate and screw construct offers strength for cranial fixation with the lowest profile on the market. With a variety of plate designs, Profile Zero provides the neurosurgeon with many options in the OR. Additionally, the updated tray design reduces the system's "footprint" in the surgical theater. Coupled with the plates and screws is a new ergonomic screwdriver handle which is functional and aesthetically appealing.



- .25mm plate-to-screw profile
- Beveled plate edges for reduced palpability
- Plates easily contourable to patient anatomy
- Customizable VisiDisk
- Reduced OR footprint



Rethinking Possibilities, Reshaping Lives

# Profile 0 Implants & Meshes

218-0201 Profile Zero 2 Hole Plate



218-0217 Profile Zero, 2 Hole Plate, Long



218-0202 Profile Zero 4 Hole Straight Plate



218-0203 Profile Zero 4 Hole Straight Plate Long



218-0204 Profile Zero 16 Hole Straight Plate



218-0205 Profile Zero Y Plate



218-0206 Profile Zero Double Y Plate



218-0207 Profile Zero 9mm Square Plate



218-0208 Profile Zero 2 X 3 Hole Quad Plate



218-0209 Profile Zero 2 X 4 Hole Quad Plate



218-0210 Profile Zero Burr Hole Plate Small (Ø14.5mm)



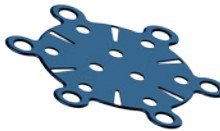
218-0218 Profile Zero Medium Burr Hole Plate (Ø18mm)



218-0211 Profile Zero Large Burr Hole Plate (Ø22mm)



218-0212 Profile Zero X-Large Burr Hole Plate (Ø26mm)



218-0213 Profile Zero Shunt Plate, Groove



218-0228 Profile Zero Shunt Plate, Wide Groove



218-0214 Profile Zero 25mm Gap Plate



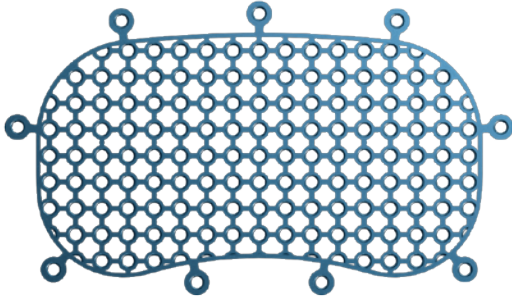
218-0215 Profile Zero 35mm Gap Plate



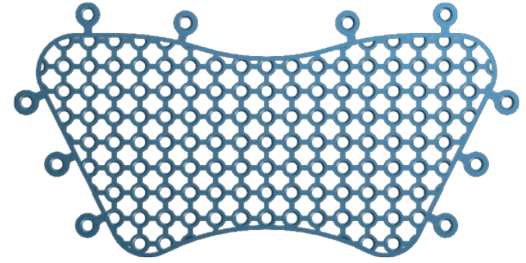
218-0216 Profile Zero 45mm Gap Plate



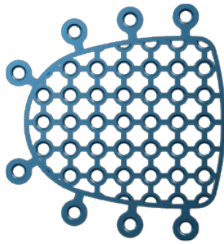
# Profile 0 Implants & Meshes



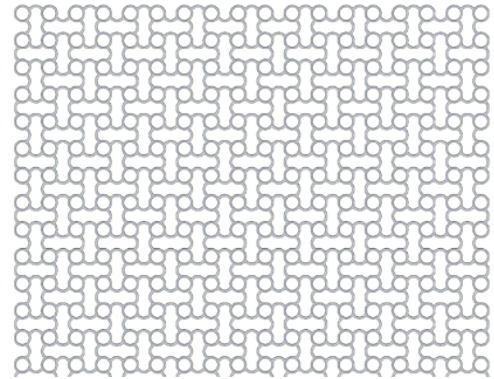
218-0223 Profile Zero Temporal Plate



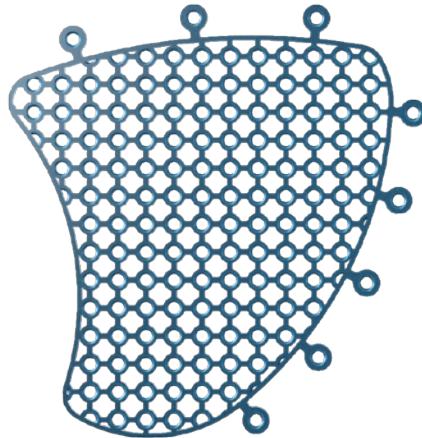
218-0227 Profile Zero Suboccipital Plate



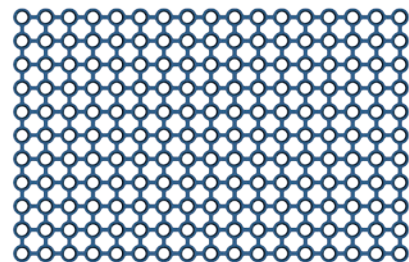
218-0224 Profile Zero MVD Plate



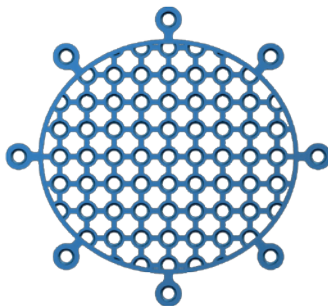
- 213-1612 LPM Mesh, 93mm x 93mm x 0.5mm
- 213-1613 LPM Mesh, 93mm x 93mm x 0.6mm
- 213-1620 LPM Mesh, 93mm x 93mm x 0.6mm, Rigid
- 213-1623 LPM Mesh, 187mm x 161mm x 0.6mm
- 213-1622 LPM Mesh, 187mm x 161mm x 0.6mm, Rigid
- 213-1614 LPM Mesh, 203mm x 203mm x 0.5mm
- 213-1624 LPM Mesh, 203mm x 203mm x 0.6mm
- 213-1621 LPM Mesh, 203mm x 203mm x 0.6mm, Rigid



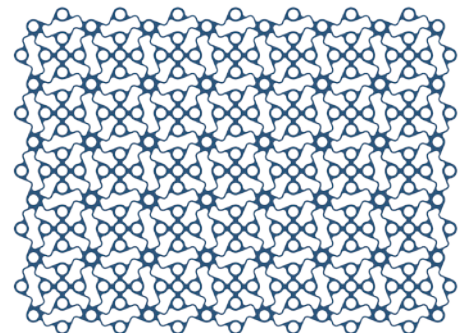
218-0225 Profile Zero Translabrynthine Plate



218-0285 Profile Zero 85mm X 50mm X .36mm Mesh



218-0226 Profile Zero Retrosigmoid Plate



218-0290 Profile Zero 65mm X 90mm X .36mm Mesh

# Instruments



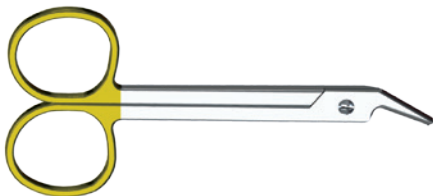
220-0262 Blue Metal Screwdriver Body



114-1621 1.6mm Driver Stem, Medium, Hex Shank



220-0260 Small Grasping Forceps



220-0261 Mesh Cutter, Angled



220-0265 Visidisk, Profile Zero



222-0004 1.1mm Pilot Drill, 4mm Stop, J-Latch



222-0006 1.1mm Pilot Drill, 6mm Stop, J-Latch



450-0700 OsteoDriver™ 2 Disposable AutoDriver™



450-0600 OsteoDriver™ Disposable AutoDriver™



218-0011-SP DuraKnife, Sterile

# Screws



218-1603 1.6mm x 3.5mm Profile Zero AutoDrive® Screw

218-1604 1.6mm x 4mm Profile Zero AutoDrive® Screw

218-1605 1.6mm x 5mm Profile Zero AutoDrive® Screw



218-1904 1.9mm x 4mm Low Profile Emergency Screw



**OSTEOMED**

3885 Arapaho Rd.  
Addison, TX 75001

Customer Service: 800.456.7779

Customer Service Fax: 800.390.2620

[www.osteomed.com](http://www.osteomed.com)

P/N 030-1731 Rev.D

