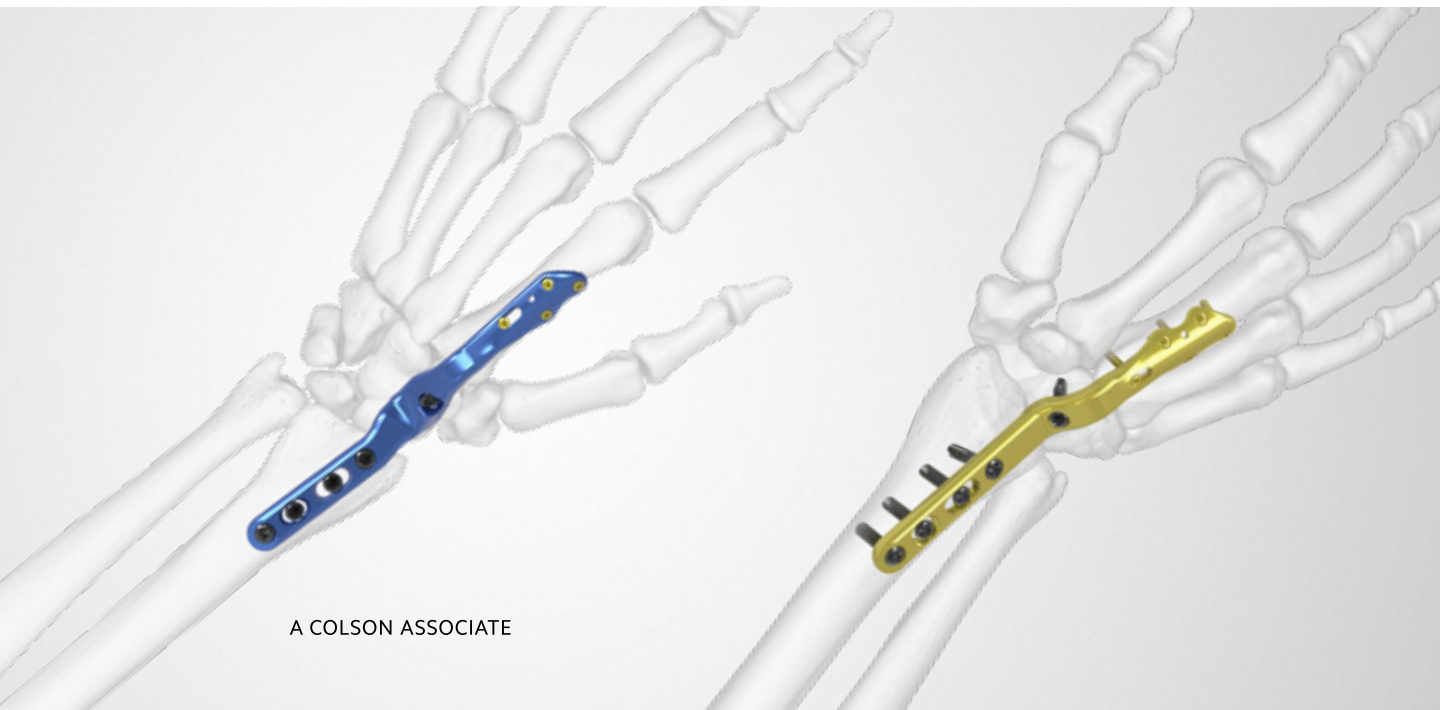


Product Overview

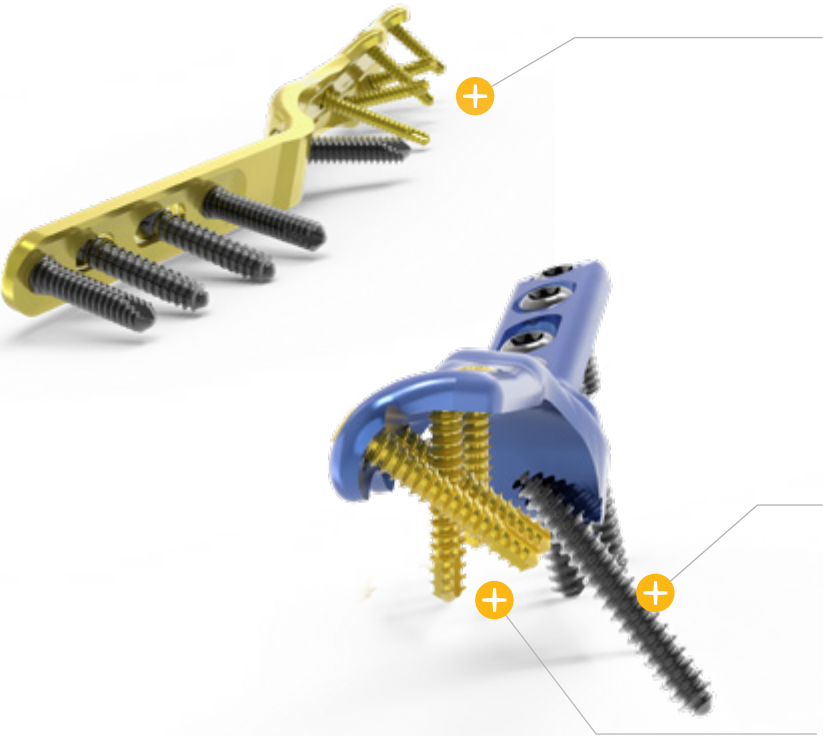


A COLSON ASSOCIATE



Acumed® Total Wrist Fusion Plating System

The Acumed Total Wrist Fusion Plating System is designed for wrist arthrodesis due to deformities associated with degenerative arthritis, brachial plexus palsies, and spastic disorders. This five-plate system features both innovative and traditional designs. Specifically, four of the five plates are positioned on the second metacarpal, which may help reduce extensor tendon irritation. Additionally, the fifth plate is a neutral option that is placed on the third metacarpal and is developed for use with a proximal row carpectomy. All plates have a 15° dorsal bend, established as a balance between anatomic resting position, hand function, and grip strength.



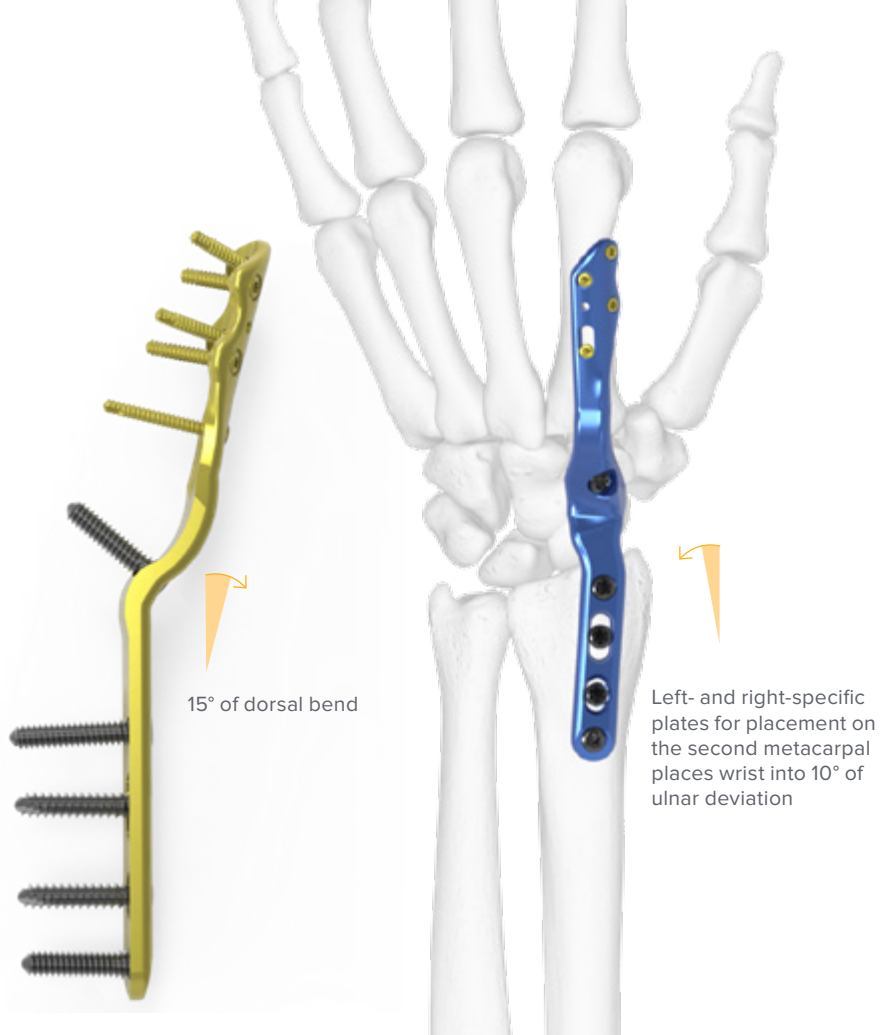
Neutral plate for placement on third metacarpal with an associated proximal row carpectomy

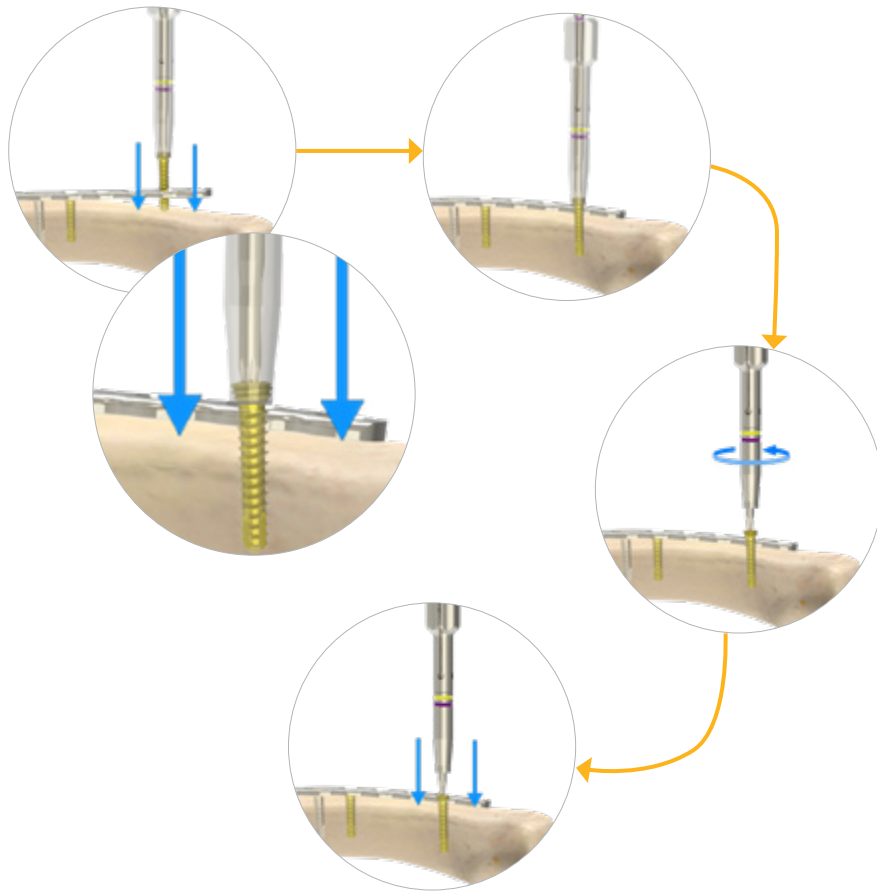
Carpal cross-screw is designed to offer additional implant stability

Converging distal screw construct is designed to assist with pullout resistance

Total Wrist Fusion

The left- and right-specific plates were designed to sit on the second metacarpal based on published literature that found that plate design is less important than plate position with regard to hardware removal rates. Plate placement in relation to extensor tendon location is important, and this is why Acumed included left- and right-specific second metacarpal plates in the system. Additionally, the left- and right-specific plates place the wrist in a slight ulnar deviation that may improve grip strength.¹

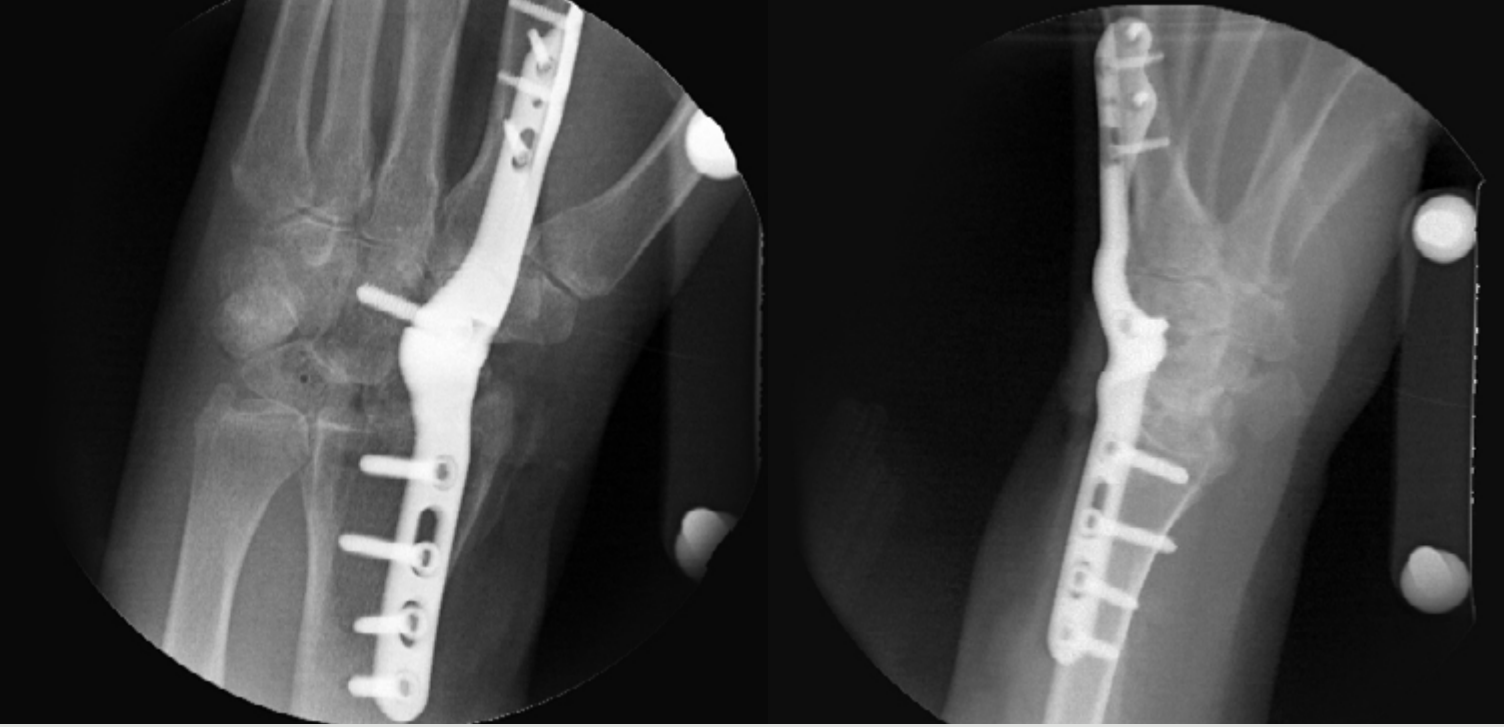




Key Instruments

SaveLock Compression Sleeve

The instrument covers the threads on the head of the Hexalobe MultiScrews while compressing the plate to the bone when inserting the screw. The sleeve is threaded over the screw head only and prevents these threads from engaging the plate when inserting the screw shaft into the bone.



A 42-year-old patient with a brachial plexus injury resulting in partial paralysis of the shoulder, elbow, and hand was treated with the Acumed Total Wrist Fusion Plating System.



A patient elected for total wrist arthrodesis following hand replantation in order to improve grip strength

**Total Wrist
Fusion System***

**Incision and
Dissection**

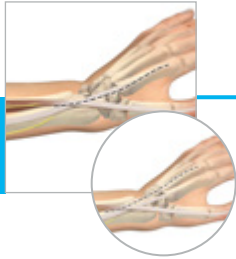
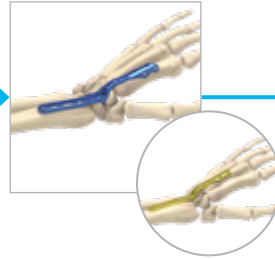
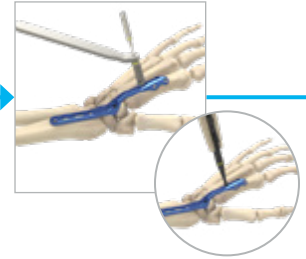


Plate Placement



**Screw Placement
and Reduction**

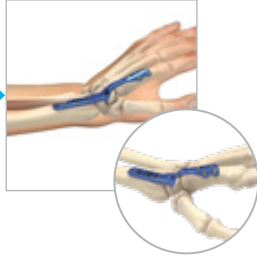


*For reference only. For full instructions, see the current
Total Wrist Fusion System Surgical Technique.

**Carpal Screw
Placement
(3.5 mm cortical or
hexalobe screw)**



Closure



- Product in Portfolio
- Partial Offering
- Product Not in Portfolio
- Product in Development

	Acumed	DePuy Synthes	Stryker	Smith & Nephew	
Shoulder	Clavicle/Scapula	Superior Clavicle Plates			
		Anterior Clavicle Plates			
		Hook Plates			
		Scapula Border Plates			
		Glenoid Plates			
	Acrion Plates				
	Humerus	Clavicle Screws/Pins			
		Proximal Humeral Nails			
		Proximal Humeral Plates			
		Midshaft Plates			
90/90 Plates					
Elbow	Distal Humerus	Parallel Plates			
		External Fixation			
		Olecranon Plates			
	Proximal Ulna	Coronoid Plates			
		Proximal Ulna Nails			
Radial Head	Radial Head Plates				
	Radial Head Replacement, Short Stem				
	Radial Head Replacement, Long Stem				
Forearm	Ulna Plates				
	Anatomic Midshaft Volar Radius Plates				

Wrist	Midshaft Forearm	Dorsolateral Midshaft Radius Plates	✓	✗	✗	✗
		Ulna Nails	✓	✗	✗	✓
		Radius Nails	✓	✗	✗	✓
	Distal Ulna	Distal Ulna Plates	✓	✓	✗	✗
		Ulnar Shortening Plates	✓	✓	✗	✗
	Distal Radius	Volar Distal Radius Plates	✓	✓	✓	✓
		Dorsal Distal Radius Plates	✓	✓	✓	✗
		Radial Styloid Plate	✓	✓	✓	✗
		Dorsal Rim Plates	✓	✗	✗	✗
		Dorsal Lunate Plates	✓	✗	✗	✗
Volar Lunate Plates		✓	✗	✗	✗	
Wrist Spanning Plates		✓	✗	✗	✗	
External Fixation		✓	✓	✓	✓	
Carpal		Wrist Fusion	✓	✓	✓	✗
		Nitinol Staples	⚙️	✓	✓	✓
	Hand Fracture Plates	✓	✓	✓	✓	
Phalangeal & Metacarpal	MCP Fusion Plates	✓	✓	✓	✓	
	External Fixation	✓	✓	✓	✗	
	Specialty Hand Plates	✓	✓	✓	✗	
	Continuous Compression	✓	✗	✗	✗	
Screws	Differential Pitch	✗	✓	✓	✓	
	Partial Thread	✓	✓	✓	✓	
	Full Thread	✓	✓	✓	✓	



Acumed Headquarters
5885 NE Cornelius Pass Road
Hillsboro, OR 97124

Office: +1.888.627.9957
Office: +1.503.627.9957
Fax: +1.503.520.9618
www.acumed.net

HNW40-08-B | Effective: 2018/10 | © 2018 Acumed® LLC

Reference

1. Field J, Herbert TJ, Prosser R. Total wrist fusion: a functional assessment. *J Hand Surg Am.* 1996;21B(4):429-433.

Competitor Data Sources

DePuy Synthes website
<https://www.depuyshnthes.com/>

Stryker website
<https://www.stryker.com/us/en/index.html>

Smith & Nephew website
<https://www.smith-nephew.com/>

All websites accessed on February 1, 2018

These materials contain information about products that may or may not be available in any particular country or may be available under different trademarks in different countries. The products may be approved or cleared by governmental regulatory organizations for sale or use with different indications or restrictions in different countries. Products may not be approved for use in all countries. Nothing contained on these materials should be construed as a promotion or solicitation for any product or for the use of any product in a particular way which is not authorized under the laws and regulations of the country where the reader is located. Specific questions physicians may have about the availability and use of the products described on these materials should be directed to their particular local sales representative. Specific questions patients may have about the use of the products described in these materials or the appropriateness for their own conditions should be directed to their own physician.

Acumed® is a registered trademark of Acumed LLC