

Advantages

Triangle Design

- Ergonomic grip
- Slip resistant

Grip

- Medical grade ABS plastic
- Lightweight material
- Textured handle

Foot Plate

- Lifts the dura
- Protects the brain tissue

Blade

- Surgical grade stainless steel
- Curved cutting surface
- Lifts and incises the dura



DURAKNIFE
DURA CUTTING INSTRUMENT

OSTEOMED
3885 Arapaho Rd.
Addison, TX 75001
Customer Service: 800.456.7779
Customer Service Fax: 800.390.2620

www.osteomed.com

P/N 030-1829 Rev.A

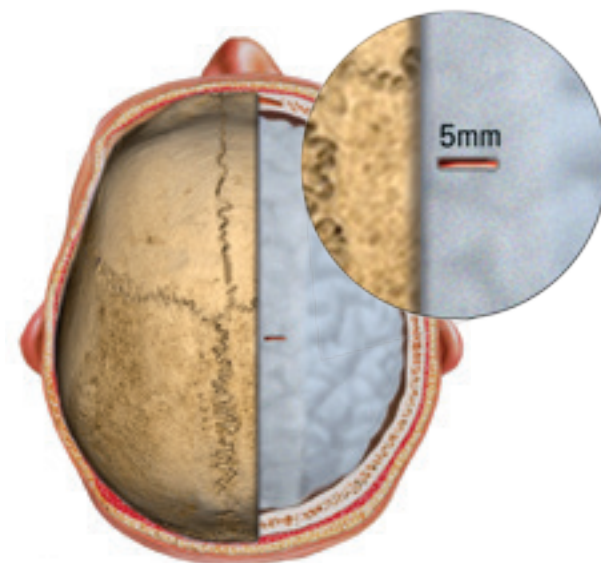
DURAKNIFE

The **OSTEOMED DuraKnife** is a dural cutting instrument used in cranial procedures. This revolutionary patent pending instrument allows the surgeon to cut the dura while protecting the neuro tissue below. The DuraKnife has a crescent-shaped blade that lifts and incises the dura simultaneously.

SURGICAL TECHNIQUE

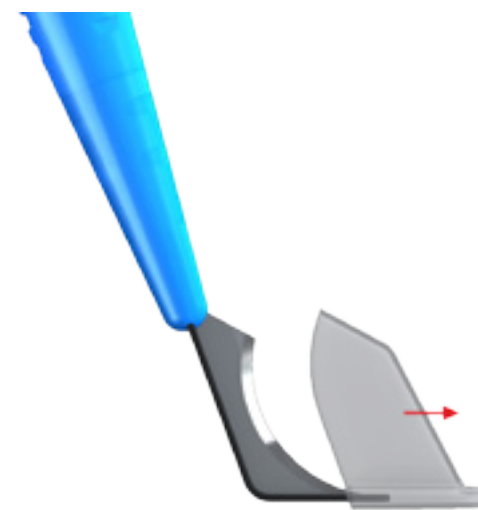
Step 1

After obtaining access to the dura, make a small 5mm incision with a scalpel in order to create the starting location for cutting of the dura.



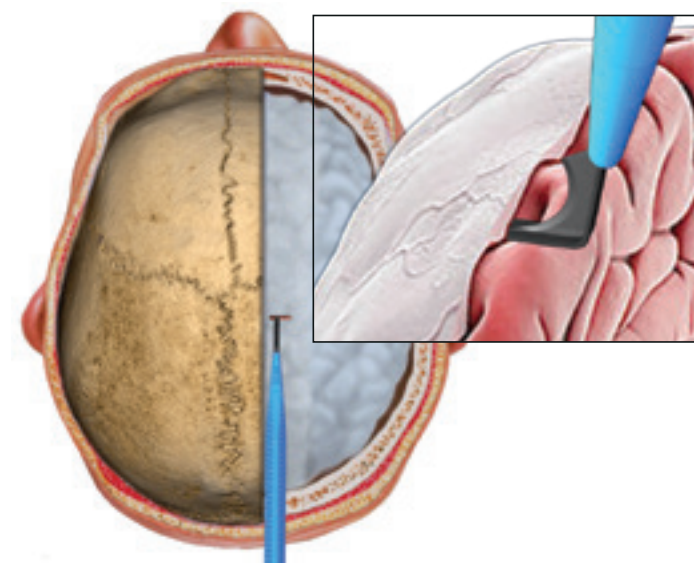
Step 2

Remove the blade cover from the OSTEOMED DuraKnife by pulling and sliding the cover away from the handle.



Step 3

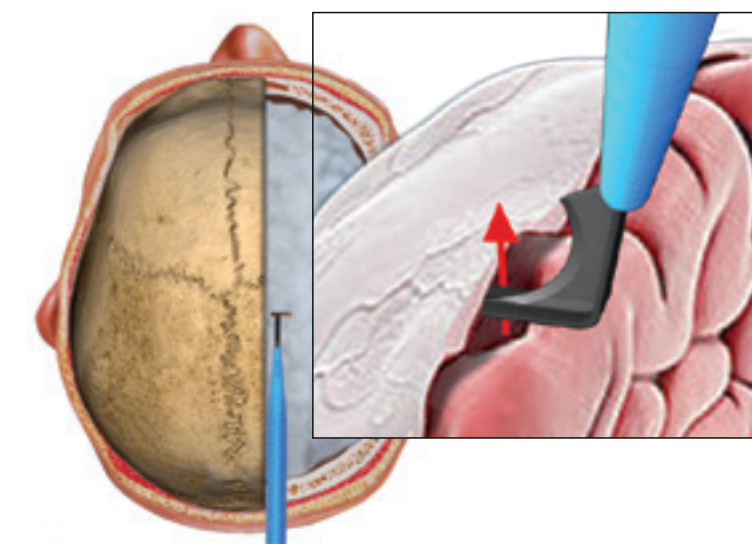
Introduce the OSTEOMED DuraKnife into the incision with the footplate underneath the dura.



SURGICAL TECHNIQUE

Step 4

Elevate and separate the dura from the brain with the foot plate

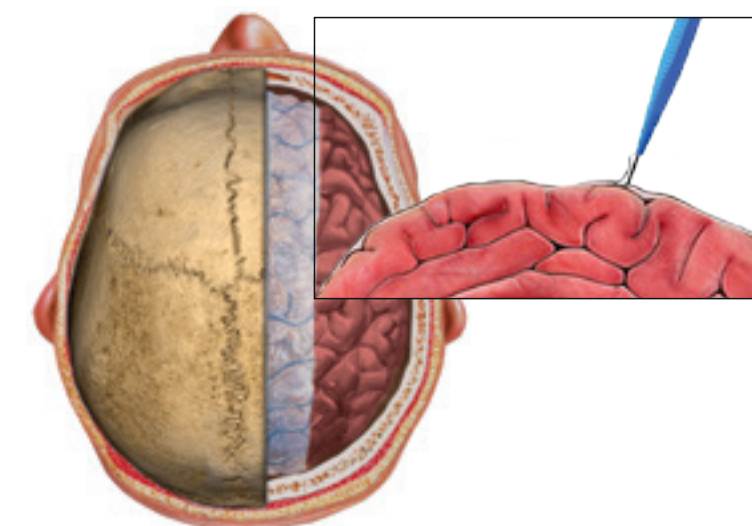


Step 5

With the OSTEOMED DuraKnife blade positioned perpendicular to the dura, begin cutting through the dura in the same direction as the incision made with the scalpel until the desired length of cut is attained.

NOTE: The OSTEOMED DuraKnife will cut up to an 8 inch opening in the dura.

NOTE: If the OSTEOMED DuraKnife does not cut the dura or does not cut it as intended, or it inadvertently cuts the brain or other vital tissue, discontinue its use and use an alternate method.



Step 6

The OSTEOMED DuraKnife is then removed, the blade cover is placed over the blade and the surgeon proceeds with the chosen procedure.

